



# MANCHESTER METRO GUIDE

From stunning green spaces to a wealth of leisure attractions, Manchester's easy-to-navigate tram network effortlessly connects all three of our Latimer sites—High Definition (MediaCity), Furness Quay (Salford Quays), and Islington Wharf (New Islington)—to everything Greater Manchester has to offer.

With so much to see and do, this handy guide will inspire your next day out in the city and beyond, helping you make the most of your journey.

- |          |  |          |   |
|----------|--|----------|---|
| <b>1</b> | MediaCity Tram Stop - <u>4 minute walk to High Definition</u>  | <b>6</b> | St Peter's Square Tram Stop                                       |
| <b>2</b> | Salford Quays Tram Stop - <u>6 minute walk to Furness Quay</u> | <b>7</b> | Piccadilly Gardens Tram Stop                                      |
| <b>3</b> | Wharfside Tram Stop - Manchester United Football Stadium       | <b>8</b> | New Islington Tram Stop - <u>6 minute walk to Islington Wharf</u> |
| <b>4</b> | Old Trafford Tram Stop - Cricket Ground                        | <b>9</b> | Ethihad Campus - Manchester City Football Stadium                 |
| <b>5</b> | Deansgate/Castlefield Tram Stop                                |          |   |

# METROLINK - ZONE 1

## Exchange Square Tram Stop - Arndale

Enjoy a spot of retail therapy & a bite to eat at New Cathedral Street, the Corn Exchange & the Arndale, all within a two-minute walk from the Exchange Square tram stop.



## Shudehill Tram Stop - Northern Quarter, Cutting Room Square and Halle St Peters (Ancoats)

From exploring independent stores in the Northern Quarter & grabbing a drink with friends in Cutting Room Square to catching a show at Hallé St Peters, hop off the met at Shudehill for easy access to these hotspots.

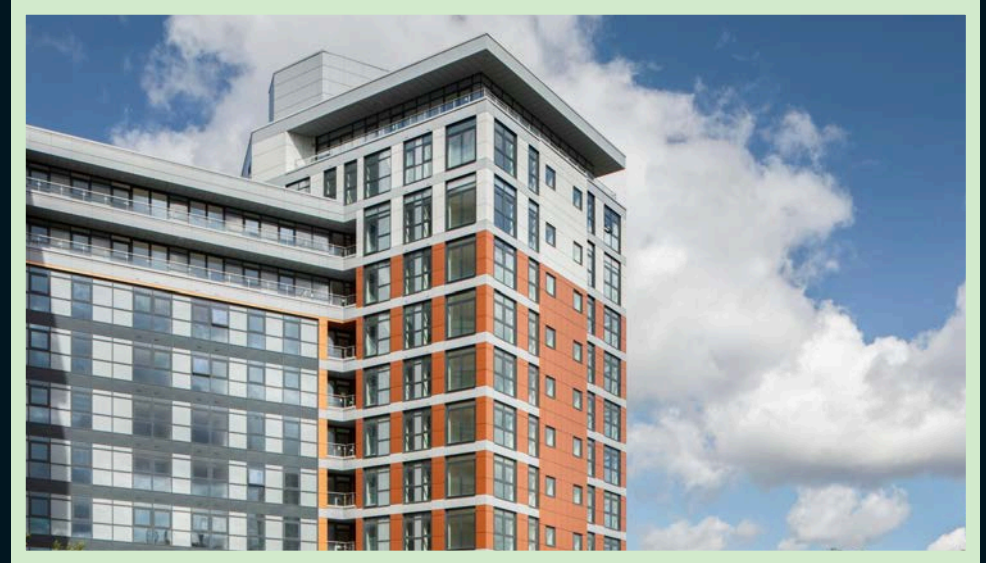




# METROLINK - ZONE 2

## MediaCity Tram Stop - Lowry Theatre

In Salford, you can find MediaCity, a vibrant central hub featuring the Lowry Theatre. From relaxing art exhibitions to exciting watersports, make the most of the year-round events.



## Chorlton Tram Stop—cafes, bars and more

On your travels, why not stop off at Chorlton for a bite to eat in one of its many independent cafes? With plenty of shops and bars to choose from, you can enjoy a full day out in the charming Manchester suburb.





# METROLINK - ZONE 3

## The Trafford Centre Tram Stop - The Trafford Centre

The world-renowned shopping centre is home to around 200 shops & amenities, from clothing stores to a cinema. After a long day of shopping, head over to the food court for a range of restaurants to choose from.

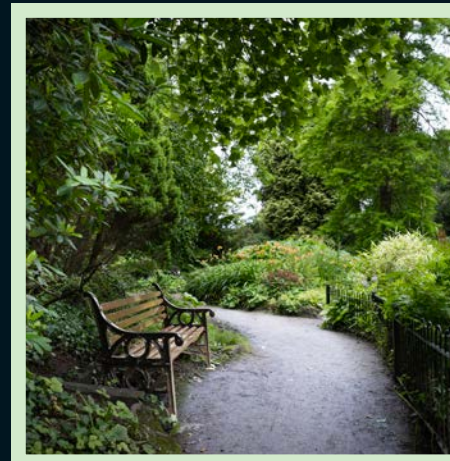
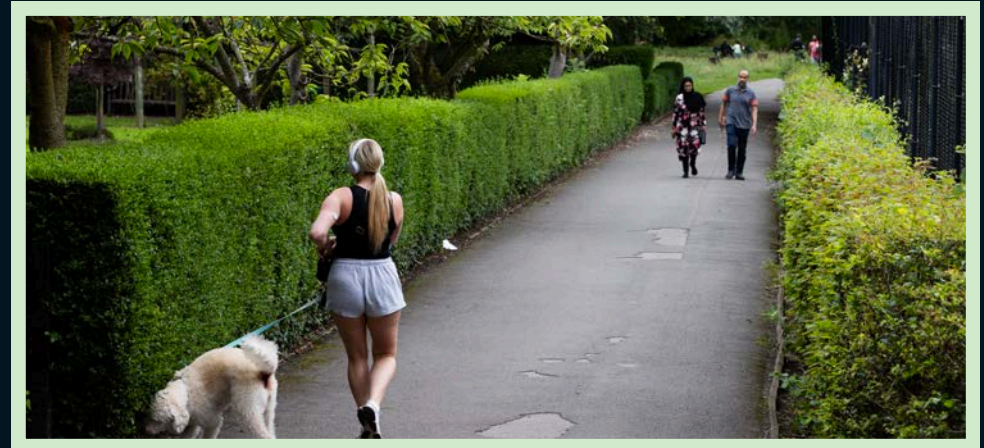


## Didsbury Village Tram Stop - Fletcher Moss Botanical Garden

Fletcher Moss Botanical Gardens is a serene outdoor oasis featuring lush greenery, vibrant flowers, & winding pathways. Perfect for leisurely strolls or picnics, it's a must-visit for nature lovers in Manchester.

## Sale Water Park Tram Stop - Sale Water Park

Cycle, stroll & splash around at Sale Water Park. With an e-bike shop, Trafford Watersports Centre & The Boat House Bar and Grill, the scenic spot is the perfect place to spend your day.



# METROLINK - ZONE 4

## Manchester Airport Tram Stop—Manchester Airport

If you're getting set to jet, hop on the Metrolink to Manchester Airport. Just a short walk from all three terminals, it's a stress-free way to catch your flight.



## Bury Tram Stop - Bury Transport Museum

From vintage vehicles to transport memorabilia, take a step back in time at Bury Transport Museum. The must-visit for history enthusiasts is just a nine-minute walk away from the tram stop.



## Altrincham Interchange - Altrincham Market

Whether you're in the mood for food or on the hunt for some artisan goods, Altrincham Markets is the place to be. Just a seven-minute walk from the met stop, you can find everything from fresh produce to unique crafts.

## Shaw & Crompton Tram Stop - Fullwood Nature Reserve and Community Gardens

Discover a diverse range of wildlife, beautiful gardens & community-led conservation projects at Fullwood Nature Reserve & Community Gardens in Shaw.